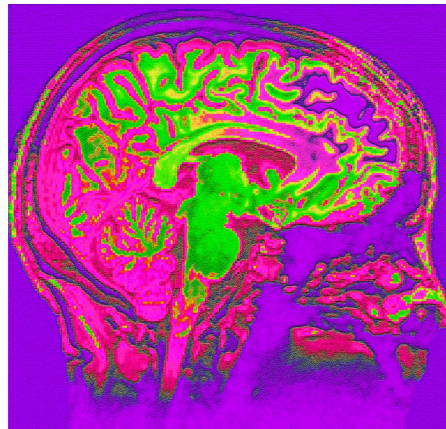
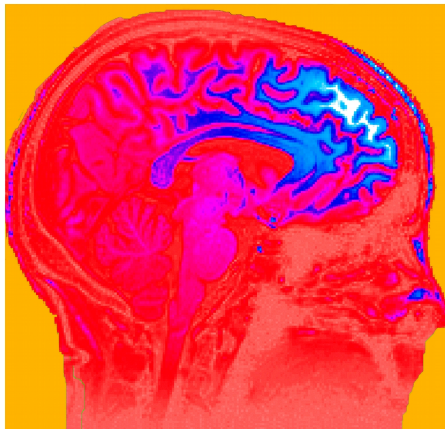
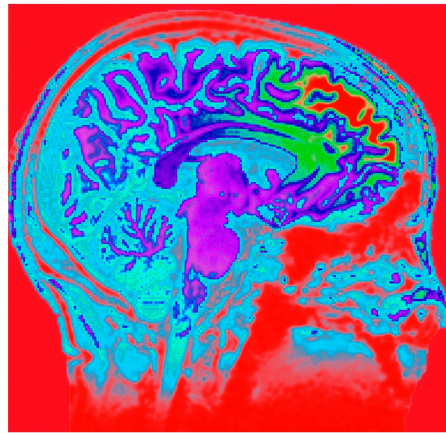
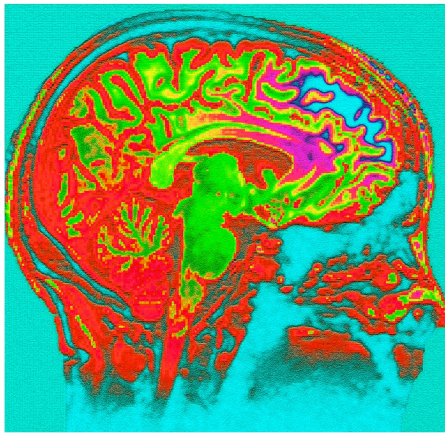


Music and the Mind



St Edmund Hall Centre for the Creative Brain
Inaugural Symposium

15th November 2014

What is creativity?

How does the brain generate creative thought?

How can we foster greater creativity in ourselves and others?

These are challenging questions. Answers have a major impact on education, business, government, art and science. The new St Edmund Hall Centre for the Creative Brain is committed to creating an interdisciplinary dialogue to address them.

This and future activities of the Centre are open to all. Whether you are a first year undergraduate, a parent, a post-graduate specialist or a senior academic, whether you are a neuroscientist or a musician or an artist, you are welcome to get involved in the Centre and become part of the dialogue.

Welcome to the Symposium, we hope you have a thoroughly enjoyable and thought-provoking day.

Charlie Stagg

On behalf of the Organising Committee

<http://www.seh.ox.ac.uk/about-college/st-edmund-hall-centre-creative-brain>

Morning timetable

9:00 - 9:30 Registration (Chough Room)

9:30 - 9:45 Welcome (Doctrow 1)

Session 1 (Doctrow 1) Chair: John Logan

9:45 - 10:30 Dr Sallie Baxendale

When the rhythm is gonna get you - Music & Epilepsy from St Vitus Dance to Musicogenic seizures

10:30 - 11:15 Dr Julian O'Kelly

Music and Neurorehabilitation

11:15 - 11:40 Coffee (Chough Room)

Session 2 Chair Charlotte Stagg

Keynote Lecture (Doctrow 1)

11:40 - 12:40 Prof Raymond Tallis

Was Schubert a Musical Brain?

Schubert Lieder (Old Dining Hall)

12:45 - 13:15 Christopher Watson

13:15 - 14:15 Lunch outside Hall

Afternoon timetable

Session 3 (Doctrow 1) Chair: Will Kerrigan

14:15 - 15:00 Prof Lauren Stewart

Music of the Hemispheres

15:00 - 15:45 Prof Paul Matthews

Neuroscience and Creativity

15:45- 16:15 Tea (Chough Room)

Session 4 (Doctrow 1) Chair: Olivia Payne

16:15 - 17:15 Alyn Shipton

Jazz Improvisation and the Musical Mind

17:15 - close Drinks (Chough Room)

Speaker Biographies

Dr Sallie Baxendale - Clinical Psychologist, Epilepsy Society Research Centre & University College London

Dr Baxendale worked on the epilepsy surgery programs at the Radcliffe Infirmary Oxford and the National Hospital for Neurology & Neurosurgery London since 1995. She is currently working as a Consultant Neuropsychologist on the epilepsy surgery program at the Institute of Neurology. She has over 80 academic publications in epilepsy, including books, book chapters and journal articles.

Sallie's research interests are focused on memory and epilepsy. A neuropsychological assessment is a long and often stressful procedure for a person with epilepsy to undertake. She is committed to ensuring that the results of these investigations are utilised for the maximum possible benefit for every patient, particularly in the pre-surgical setting. It is this commitment to evidence-based practise that drives my research endeavours.

Sallie serves on the editorial boards of *Epilepsia*, *Epilepsy & Behavior*, *Epilepsy & Behavior:Case Reports* and *Epilepsy Professional*. She also currently serve on the ILAE Diagnostic Commission. She also regularly review research grant applications for the Wellcome Trust, Brainwave, Epilepsy Research UK and other international grant giving bodies.

Dr Julian O'Kelly - Research Fellow, Royal Hospital for Neuro-disability

Dr O'Kelly has worked in music therapy as a clinician, researcher and educator since 1990. With experience in palliative care and neurodisability, he has authored a range of papers and regularly speaks at international conferences and symposia. He successfully defended his PhD in Music therapy with Aalborg University in April 2014.

His current research is focussed on exploring the effects of music therapy on rehabilitation outcomes with those in prolonged disorders of consciousness. This work builds on his main doctoral study exploring the neurophysiological effects of music therapy with this population. The *Frontiers* paper which details this study is currently in the top 5% of all articles ranked by attention by Altmetric, and available at <http://journal.frontiersin.org/Journal/10.3389/fnhum.2013.00884/abstract>

Professor Raymond Tallis - Philosopher & Clinical Neuroscientist

Prof Tallis is a philosopher, poet, novelist and cultural critic and was until recently a physician and clinical scientist. In the *Economist's Intelligent Life* Magazine (Autumn 2009) he was listed as one of the top living polymaths in the world.

Born in Liverpool in 1946, one of five children, he trained as a doctor at Oxford University and at St Thomas' in London before going on to become Professor of

Geriatric Medicine at the University of Manchester and a consultant physician in Health Care of the Elderly in Salford. Professor Tallis retired from medicine in 2006 to become a full-time writer, though he remained Visiting Professor at St George's Hospital Medical School, University of London until 2008.

Over the last 20 years Raymond Tallis has published fiction, three volumes of poetry, and 23 books on the philosophy of mind, philosophical anthropology, literary theory, the nature of art and cultural criticism. Together with over two hundred articles in *Prospect*, *Times Literary Supplement* and many other outlets, these books offer a critique of current predominant intellectual trends and an alternative understanding of human consciousness, the nature of language and of what it is to be a human being. For this work, Professor Tallis has been awarded two honorary degrees: DLitt (Hon. Causa) from the University of Hull in 1997; and LittD (Hon. Causa) at the University of Manchester 2002. He is Visiting Professor of English at the University of Liverpool.

Chris Watson - Director of Music, St Edmund Hall

Chris read music at Exeter University and for the last 22 years has been singing professionally with some of the finest vocal ensembles in the world.

He sang as a Lay Clerk for 14 years in the choirs of Durham Cathedral, Christ Church Oxford and Westminster Cathedral, and is a member of the Tallis Scholars, with whom he had made nearly 300 appearances. He also sings regularly with *Tenebrae*, *Gallicantus*, *Alamire* and *Theatre of Voices*, and has sung as a soloist for many leading conductors.

He has made over 100 recordings, many of which have won international awards, including one Grammy and eight Gramophone Awards. He is co-founder and director of the Oxford-based chamber choir *Sospiri* who regularly give concerts in Oxford and have toured Italy and France. They have produced five recordings, and are currently in the process of commissioning a new series of choral settings of First World War poetry.

Professor Lauren Stewart - Reader, Goldsmiths, University of London

Lauren Stewart's undergraduate degree was in Physiological Sciences at Balliol College Oxford, where she also studied for an MSc in Neuroscience. She completed her PhD at the Institute of Cognitive Neuroscience, followed by postdoctoral positions at Newcastle University and a travelling fellowship to Harvard Medical School.

She is currently a Professor in the Department of Psychology at Goldsmiths, University of London where she founded the MSc programme in the Music, Mind and Brain lab.

Her research has focused on topics including congenital amusia, musical training as a model of plasticity, and spontaneous musical imagery. This work has been funded by

grants from the Economic and Social Research Council and the Leverhulme Trust. She is associate editor of the APA journal, Psychomusicology.

Professor Paul Matthews - Head, Division of Brain Sciences, Imperial College London & Fellow, St Edmund Hall

Prof Matthews' research is noted for innovative translational applications of clinical imaging for the neurosciences. This has developed with exploitation of the powerful synergies between the physical and quantitative sciences and medicine. He was the founding Director of two internationally leading research imaging centres, the University of Oxford Centre for Functional Magnetic Resonance Imaging of the Brain (fMRI) and, later, of GlaxoSmithKline's Clinical Imaging Centre (now a public "spin out" as Imanova, Ltd). From 2005 - 2014 he was a Vice President GlaxoSmithKline Medicines Discovery and Development. He is one of the small number of senior clinical academics in the UK with industry experience.

Professor Matthews was awarded an OBE in 2008 for services to neuroscience. He was elected to the Academy of Medical Sciences in 2014.

Alyn Shipton - Writer, Broadcaster, Jazz Historian & Alumnus of St Edmund Hall

Alyn Shipton is an award-winning author and broadcaster, who is jazz critic for The Times in London, and a presenter/producer of jazz programmes for BBC Radio

In 2003 he won the Willis Conover / Marian McPartland Award for lifetime achievement in Jazz Broadcasting. In 2010 he was named Jazz Broadcaster of the Year in the UK Parliamentary Jazz Awards. Alyn won an open scholarship to Oxford in 1972, where he read English at St. Edmund Hall.

He later went on to take a PhD in music history at Oxford Brookes University. He has been a lecturer in music at Brookes (2002-3), teaching the jazz history course, and he has also given lectures on jazz and American popular music at Exeter University and at the Institute for United States Studies in the University of London. He is now lecturer in Jazz History at the Royal Academy of Music, London. Alyn divides his time between living in Oxford, UK, and deep in rural France.

